



6800 Series Patio Door



Patio Door Standard Features

- All welded frame and sash.
- Full 1" insulated glass unit for year round energy savings.
- Steel adjustable tandem rollers.
- Multi-chambered vinyl profiles for thermal efficiency.
- Dual-point locking hardware with keyed lock.
- Sliding screen.
- Nailing flange.

Patio Door Additional Options

- Foam filled frame and sash.
- Kick locks.
- Three light configurations and custom sizes.
- Nine standard painted exterior colors
- Grids in-between the glass.
- Blinds in-between the glass available in standard sizes.*

6800 PATIO DOOR				
CLIMATE ZONE	U-VALUE	SHCC	VISIBLE TRANSMITTANCE	CONDENSATION RESISTANCE
GLASS PACKAGE #1		LOE272 / ARGON / CLEAR		1" IG LOE SURFACE #2
NO FORM	.29	.35	.60	61
FORM	.28	.35	.60	61
GLASS PACKAGE #2		LOE272 / ARGON / CLEAR		1" IG LOE SURFACE #2
NO FORM	.28	.23	.54	61
FORM	.27	.23	.54	61
GLASS PACKAGE #3		LOE272 / ARGON / CLEAR		1" IG LOE SURFACE #2 & #4
NO FORM	.23	.22	.53	50
FORM	.22	.22	.53	50
GLASS PACKAGE #4		LOE272/ARGON/CLEAR/ARGON/LOE272		1" IG LOE SURFACE #2 & #5
NO FORM	.21	.30	.48	67
FORM	.20	.30	.48	68

* Excludes triple glazed units. Extended lead times and size limitations per custom.

Do to the limitations of the printing process, colors shown may vary. Please call for actual color samples if needed.

Standard Interior/Exterior Vinyl Colors



Standard Exterior Painted Colors

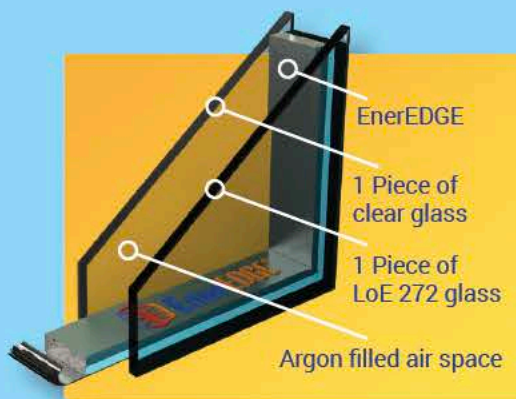


Standard Interior Woodgrain Laminates



Tundra Patio Door Glazing Options

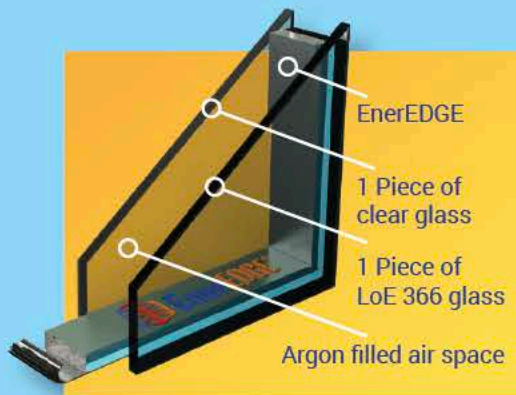
Hardware Options



Thermal Performance Package #1

1" overall thick dual pane unit consisting of one LoE 272 and one clear pane with EnerEDGE spacer and argon fill.

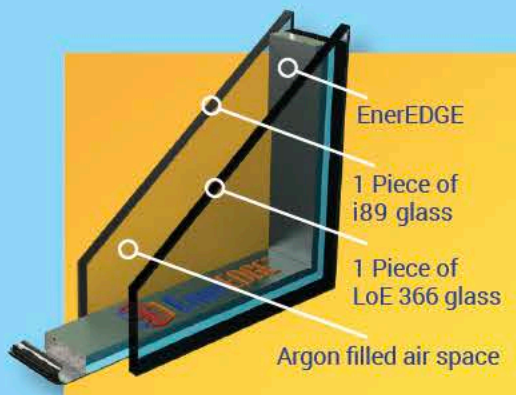
- 33% more argon than a 3/4" I.G.
- 14% more argon than a 7/8" I.G.
- Increased condensation resistance.
- Increased inside glass temperature.
- Save more on heating and cooling costs.



Thermal Performance Package #2

1" overall thick dual pane unit consisting of one LoE 366 and one clear pane with EnerEDGE spacer and argon fill.

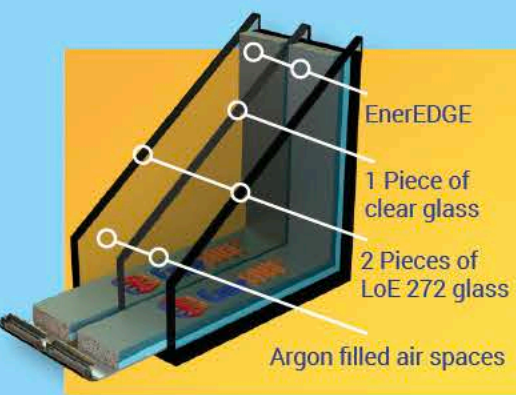
- One of the highest performing glass available.
- 40% better U-value for lower winter heating costs.
- 281% less solar heat gain for lower summer cooling costs.
- 95% cuts in fading transmission.



Thermal Performance Package #3

1" overall thick dual pane unit consisting of one LoE 366 and one LoE i89 pane with EnerEDGE spacer and argon fill.

- Triple pane performance in a dual pane window.
- Does not affect solar heat gain coefficient like triple glazing.
- 25% better U-value than 366/clear IG.
- Room side coating reflects heat back into the living space for better comfort.



Thermal Performance Package #4

1" overall thick triple pane unit consisting of two LoE 272 and one clear pane with EnerEDGE spacer and argon fill.

- 2 EnerEDGE spacers.
- 2 argon dead air spaces.
- Up to 34% better insulating performance than Package #1.
- Significant noise reduction over dual pane glazing options.

EnerEDGE® Warm Edge Spacer System

What is EnerEDGE®?

EnerEDGE is a pre-desiccated, ready-to-apply, cellular silicone warm-edge spacer that is suitable for a wide range of insulating glass constructions in fenestration applications. EnerEDGE spacer is inset and applied to a glass lite's perimeter to enable fabrication of dual and triple-glazed IG units in conjunction with a quality applied perimeter sealant.

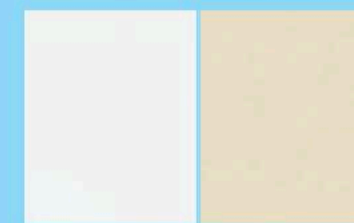
EnerEDGE Advantages

- Long term durability • Warm edge technology • Low conductivity spacer
- Dual spacer to prevent sheering • Thermal performance that meets international standards



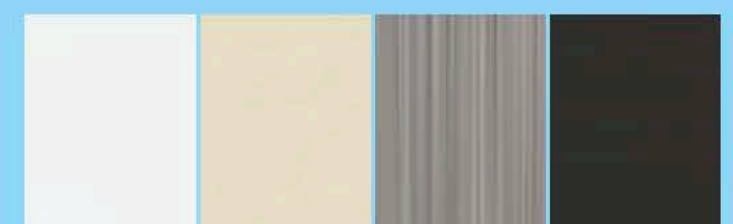
Omega One-Piece Door Handle

Omega Keyed Exterior Handle available in: White and Almond.



White Almond

Omega Interior Handle available in: White, Almond, Satin Nickel, Faux Oil Rubbed Bronze.



White Almond Satin Nickel Faux Oil-Rubbed Bronze

Due to the limitations of the printing process, colors shown may vary. Please call for actual color samples if needed.

